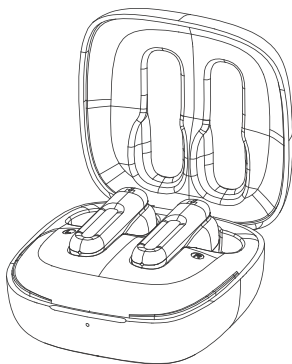
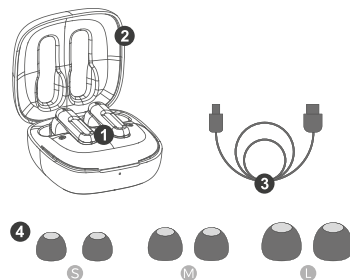


# MHIB TRUE WIRELESS

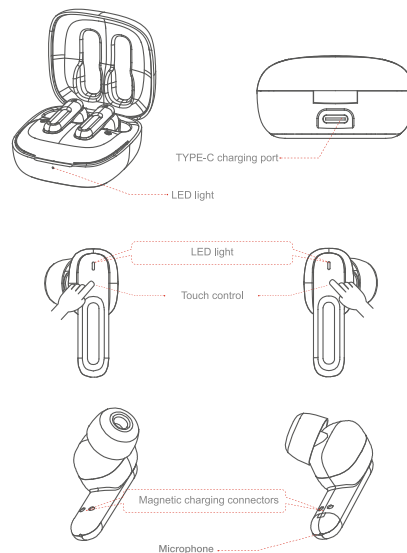


WWW.MARSGAMING.EU

## PRODUCT OVERVIEW



- 1 Earbuds
- 2 Charging case
- 3 USB-C / USB-A changing cable
- 4 3 size eartips

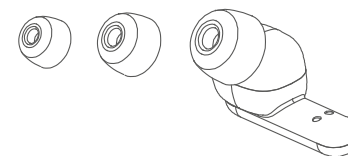


## SETUP

Please fully charge the charging case and earbuds battery before you use it for the first time with the included USB-C/USB-A cable.

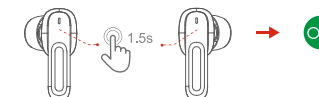
## SILICON EARTIPS

MHIB includes 3 size silicon eartips L, M, S which helps to improve comfort, sound isolation, sound quality and grip. Choose the one it fits your ear canal better by simply swapping the eartips.



## POWER ON

- 1 The earbuds will switch ON when they are taken out from the charging case. If the earbuds have been previously paired, they will be automatically connected to the Bluetooth device.
- 2 If the earbuds are not paired and they are outside the charging case for a few minutes they will automatically power OFF to save battery. Press and hold the touch sensor for 1,5 seconds to power ON the earbuds.

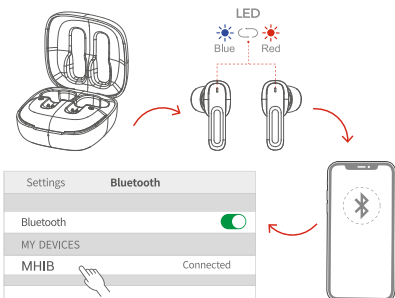


## POWER OFF

- 1 Put the earbuds back in the charging case and close the case, they will automatically power OFF.
- 2 Press and hold both earbuds touch sensor for 5 seconds to power OFF.

## BLUETOOTH PAIRING

- 1 Take out the earbuds from the charging case, the LED will blink in red and blue when in pairing mode.
- 2 Enable Bluetooth in the audio device and look for "MHIB" in the Bluetooth device list.
- 3 When the device has been successfully paired, the earbuds LED will switch OFF.
- 4 If you want to pair another device, make sure to switch OFF other Bluetooth paired devices.



## TOUCH SENSOR FUNCTIONS

	ACTION	FUNCTION
GENERAL	Press and hold 5s	Power OFF
	Press and hold 1,5s	Power ON
	Press and hold 1,5s	*Decrease/ Increase Volume
MULTIMEDIA	2x Taps	Play/Pause
	3x Taps	*Previous Next Track
	4x Taps	Voice Assistant
CALLS	1x Tap	Answer Hang Call
	Press and hold for 1s	Reject Call

\*Press left earbud to decrease and the right to increase volume  
\*Press left earbud to previous and the right to next track

## CHARGING

Please fully charge the charging case and earbuds battery before you use it for the first time. Use the USB-C/USB-A cable included to charge the case connecting it to the computer USB or any USB charge plug adapter, the case and earbuds will be fully charged in 1,5 hours. Earbuds playtime may vary depending on device, volume and audio content played.

## LED ALERTS

	LED STATUS	DESCRIPTION
EARBUDS	Blinking RED/BLUE	Pairing mode
	No LED	Successfully paired
	Static RED	Charging
	No LED	Fully charged
CASE	Blinking RED	Case is charging
	Static RED	Case fully charged
	Static BLUE	Charging earbuds
	No LED	Earbuds finished charging

## TROUBLE-SHOOTING

### Unsuccessful connection

1. Make sure earbuds are ON and the earbuds LED is blinking RED and BLUE.
2. Make sure the earbuds are not already connected to another Bluetooth device.
3. Put earbuds inside the case and take them out, repeat the pairing process.

### Stuttering audio

1. Check if the Bluetooth device is too far from earbuds.
2. Check if there are any obstacles between device and earbuds.

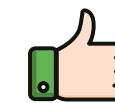
### Earbuds doesn't switch ON

1. Battery is low
2. Put them inside the case and charge them.

From Mars Gaming team:  
we want to thank you for the purchase of this product!  
We try to improve everyday to offer the best service and the best quality on our peripherals. Thank you for your trust!

## ARE YOU HAPPY WITH YOUR PURCHASE?

YES



Rate us in your marketplace and share your experience in your social media

@MarsGaming\_  
 marsgaming  
 MarsGamingOfficial

NO



Please contact our technical support service by sending an e-mail to

support@marsgaming.eu

WWW.MARSGAMING.EU