

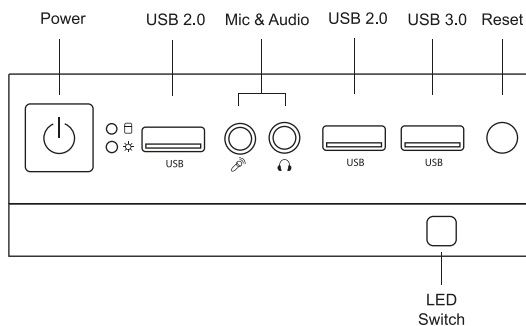
**MC8**

User's Manual  
Manual de usuario  
Handbuch

Manuel d'utilisation  
Manuale utente  
Manual do usuário

Instrukcja obsługi  
Gebruikershandleiding  
Руководство пользователя

## I / O Panel



- **Switch OFF lighting:**  
Hold LED switch for 10 secs to turn off LED
- **Lighting mode control:**  
Switch between 58 lighting effects or addressable RGB motherboard control by pressing LED switch for 7 seconds

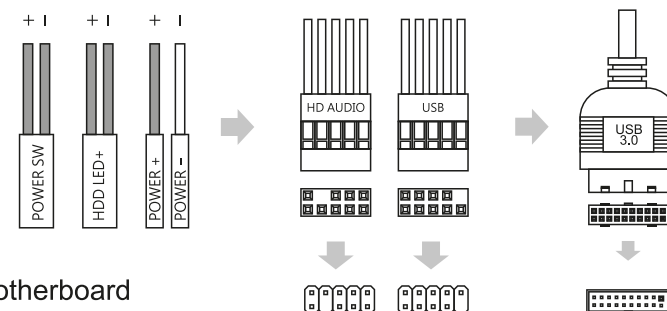
## Accessory Bag Contents



### Front I/O Panel Cable Connection

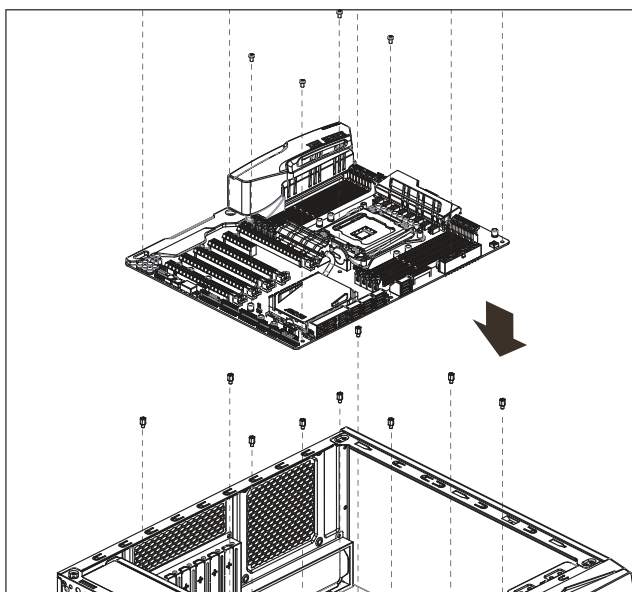
(Please refer to the motherboard's manual for further instructions).

### Front Panel Connector



Motherboard

## How to Install Guide



## 1 Motherboard

**EN**

Install Motherboard

**ES**

Instalación de la placa base

**DE**

Motherboard installieren

**FR**

Installer carte mère

**IT**

Installazione della scheda madre

**PT**

Instalar a placa principal

**PL**

Instalacja płyty głównej

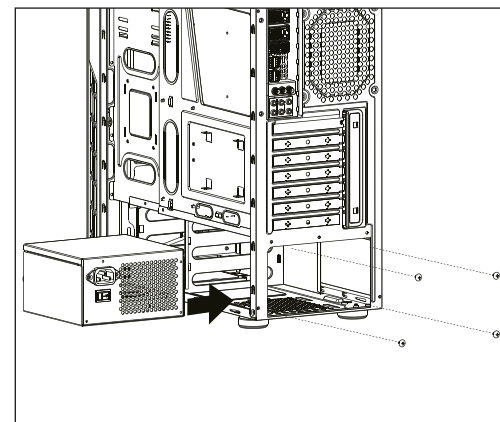
**NL**

Installeer het moederbord

**RU**

Установка материнской платы

## 2 PSU



**EN**

Install PSU

**ES**

Instalación de Fuente

**DE**

Netzteil installieren

**FR**

Installer unité d'alimentation

**IT**

Installazione della PSU

**NL**

Installeer PSU

**RU**

Установка блока питания

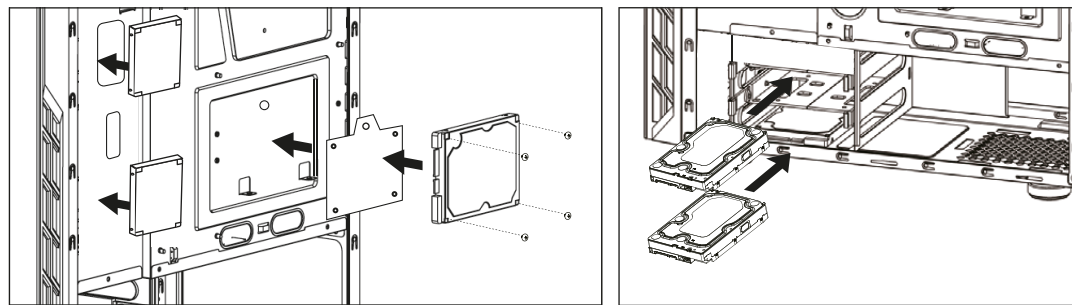
**PT**

Instalar a fonte de alimentação

**PL**

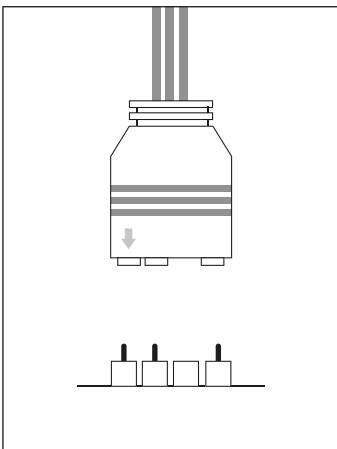
Instalacja zasilacza

3 3.5" HDD x 2 / 2.5" SSD x 3



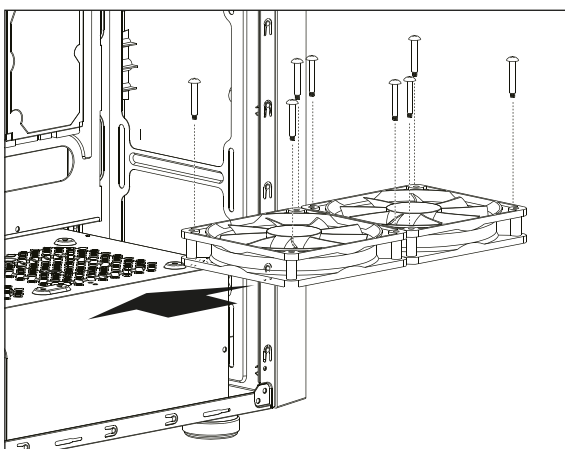
- EN**  
Install 3.5" HDD  
Install 2.5" SSD
- IT**  
Installare l'unità HDD 3,5"  
Installare l'unità SSD 2,5"
- PL**  
Instalacja HDD 3,5"  
Instalacja SSD 2,5"
- PT**  
Instalar o HDD de 3,5"  
Instalar o SSD 2,5"
- RU**  
Установите 3,5  
дюймовый жесткий диск  
Установщик SSD 2.5"
- ES**  
Instalación de 3.5" HDD  
Instalación de 2.5" SSD
- FR**  
Installer disque dur 3,5"  
Installer SSD 2,5"
- NL**  
Installeer 3,5 "HDD  
Installeer SSD 2,5"
- DE**  
3,5-Zoll-Festplatte installieren  
2,5-Zoll-SSD installieren

5 ARGB motherboard connector



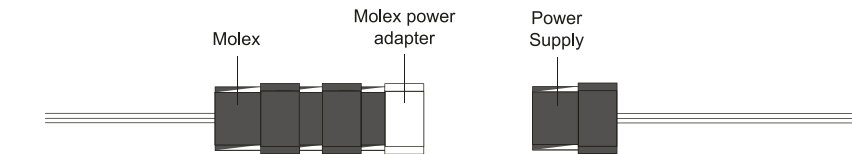
- EN**  
Connect the ARGB 3-Pin connector to the motherboard
- ES**  
Conectar ARGB 3-Pin a la placa base
- DE**  
Verbinden Sie den 3-poligen ARGB-Stecker mit dem Motherboard
- FR**  
Connectez le connecteur ARGB à 3 broches à la carte mère
- IT**  
Collegare il connettore a 3 pin ARGB alla scheda madre
- PT**  
Conecte o conector ARGB de 3 pinos à placa-mãe
- PL**  
Podłącz 3-stykowe złącze ARGB do płyty głównej
- NL**  
Sluit de 3-pins ARGB-connector aan op het moederbord
- RU**  
Подключите 3-контактный разъем ARGB к материнской плате

4 120mm fans on cage



- PL**  
Instalacja wentylatora
- NL**  
Installatie van de ventilator
- RU**  
Установка вентилятора
- EN**  
Fan installation
- ES**  
Instalación de ventilador
- DE**  
Installation des Lüfters
- FR**  
Installation du ventilateur
- IT**  
Installazione della ventola
- PT**  
Instalação do ventilador

6 FAN connection



- EN**  
Connect the PSU to the MOLEX
- ES**  
Conecta la PSU al MOLEX
- DE**  
Schließen Sie PSU an das MOLEX
- FR**  
Connectez le PSU à MOLEX
- IT**  
Collega l'alimentatore a MOLEX
- PT**  
Conecte a PSU ao MOLEX
- PL**  
Podłącz zasilacz do MOLEX
- NL**  
Sluit de PSU aan op de MOLEX
- RU**  
Подключите БП к MOLEX